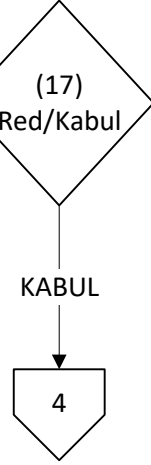


İdari davalar Servisi Personeli



RED

Yürütmenin
durdurulmasının
reddi kararı

(18)
Mahkemece verilen
yürütmenin
durdurulmasının
reddi kararı gelir

Belgenet

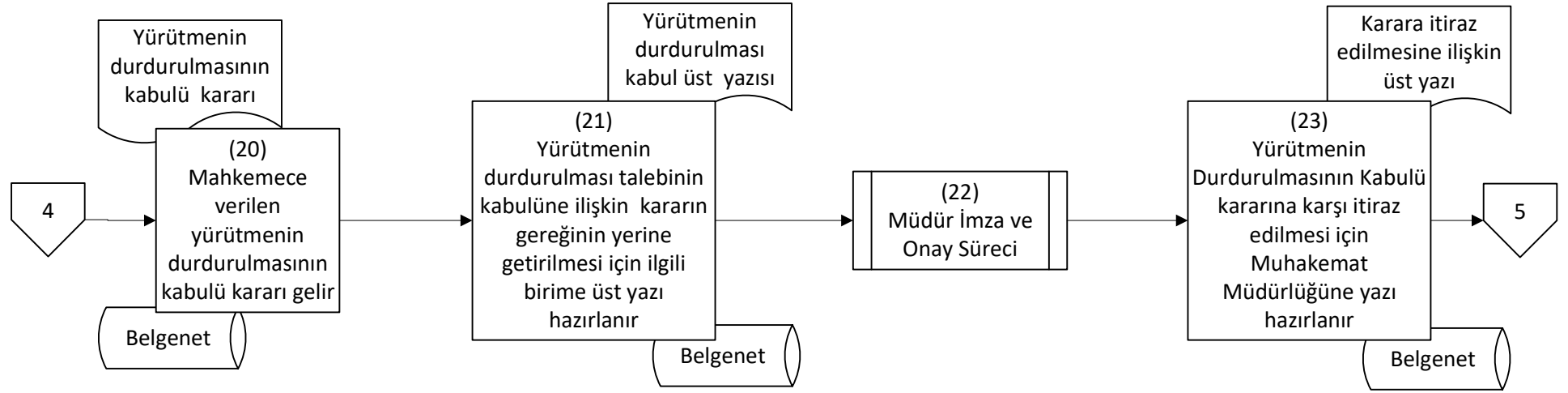
(19)
Konuya ilişkin tüm evraklar
ilgilinin idari dava işlem
dosyasına konur ve özlük
dosyasına kaldırılır

Süreç Sonu

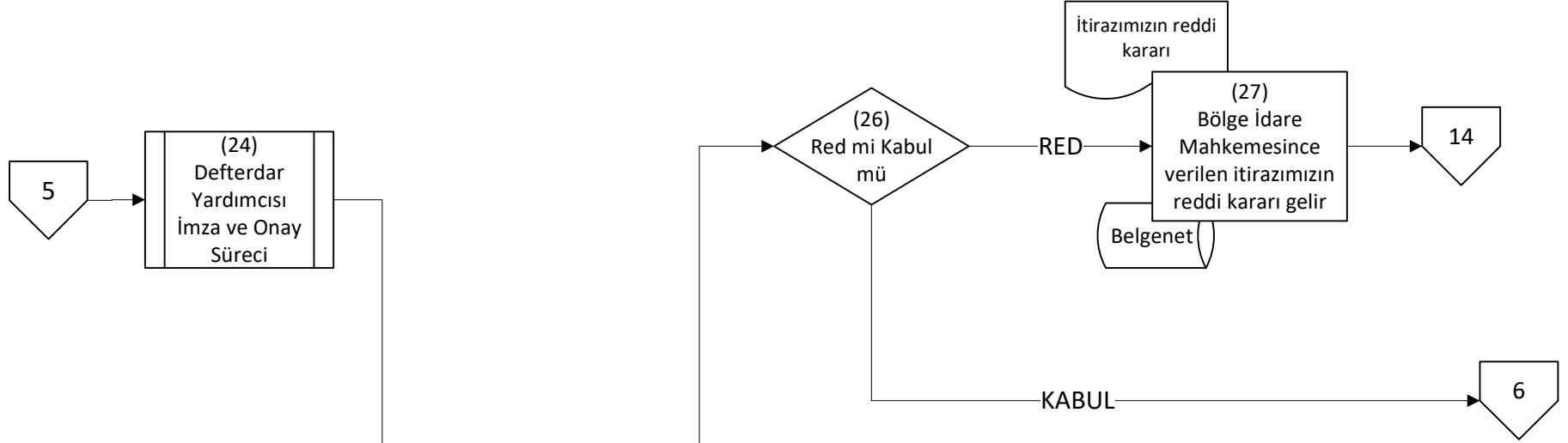
Muhakemat Müdürlüğü

3

(16)
İdari Davalar
Süreci

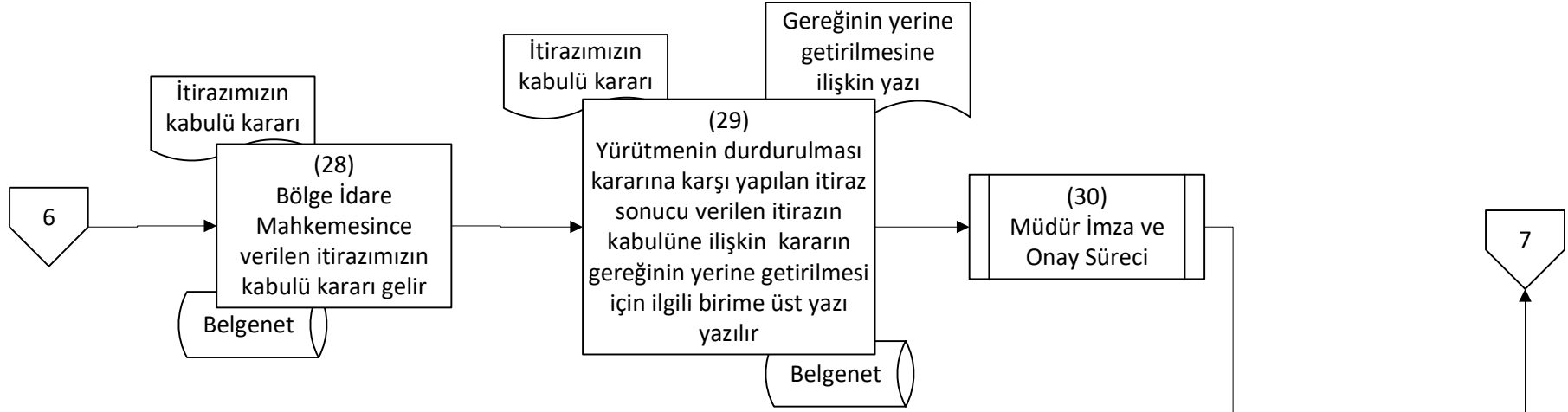


İdari davalar Servisi Personeli

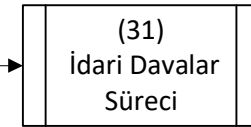


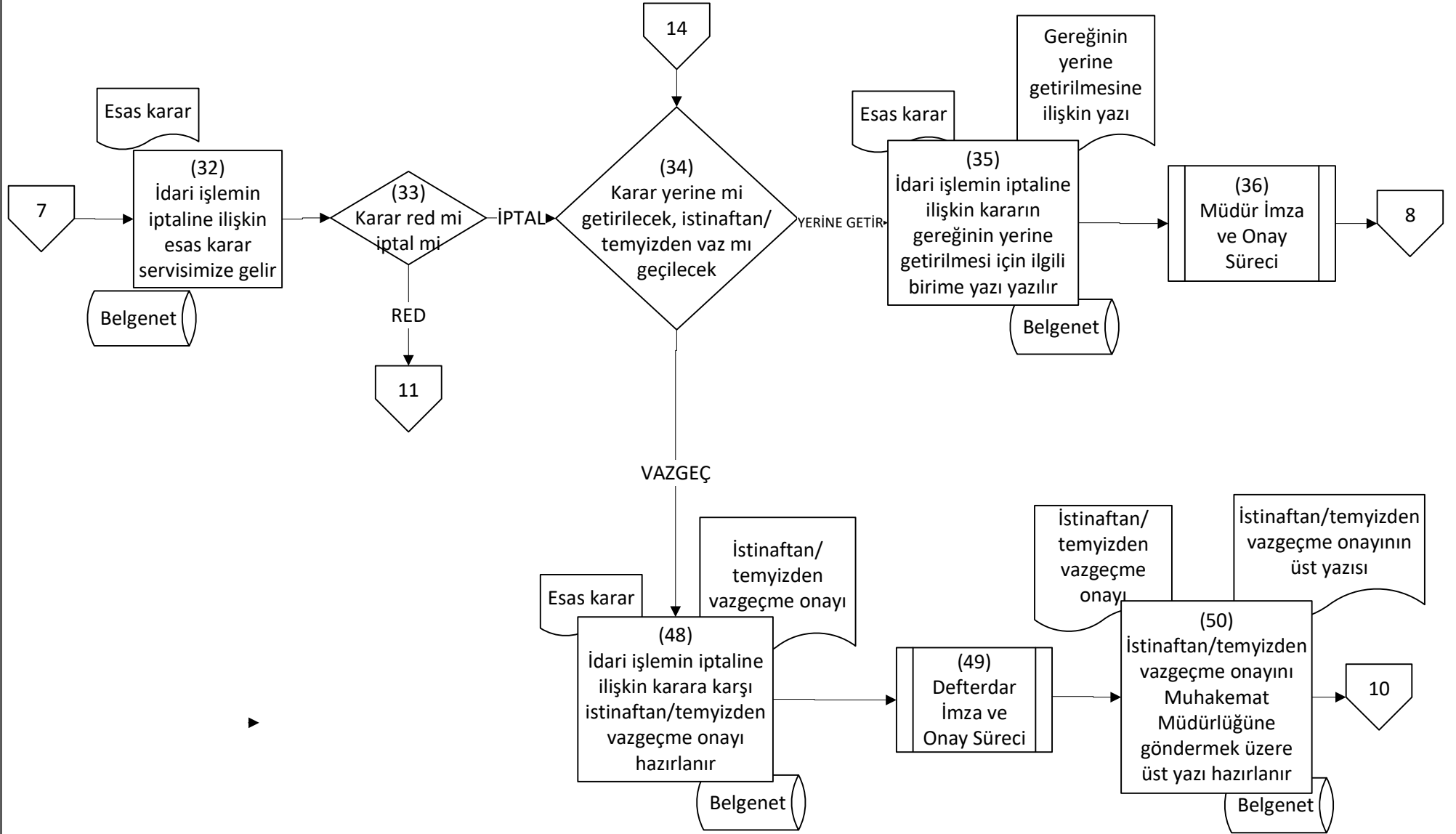
Muhakemat Müdürlüğü

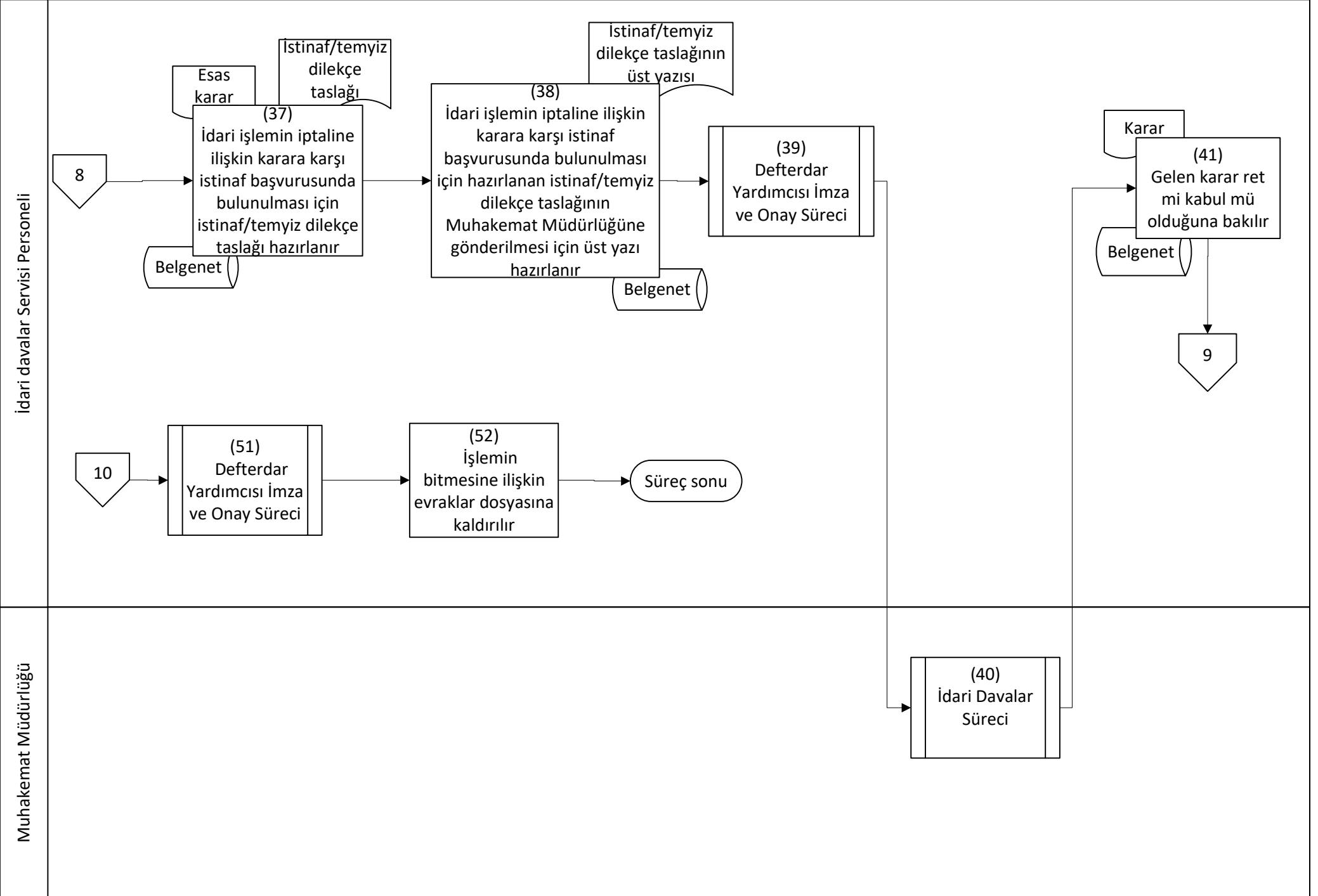
İdari davalar Servisi Personeli

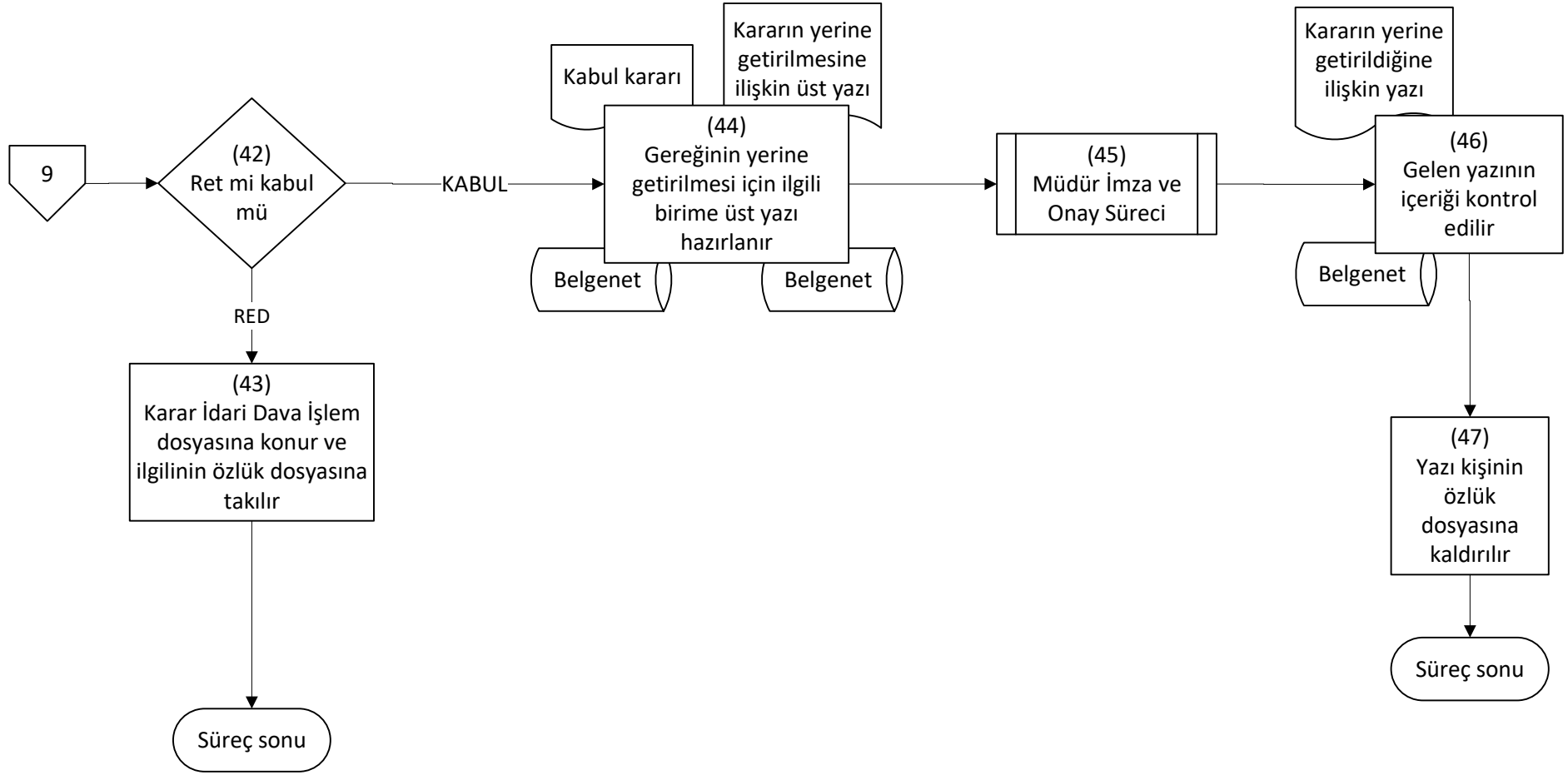


Muhakemat Müdürlüğü

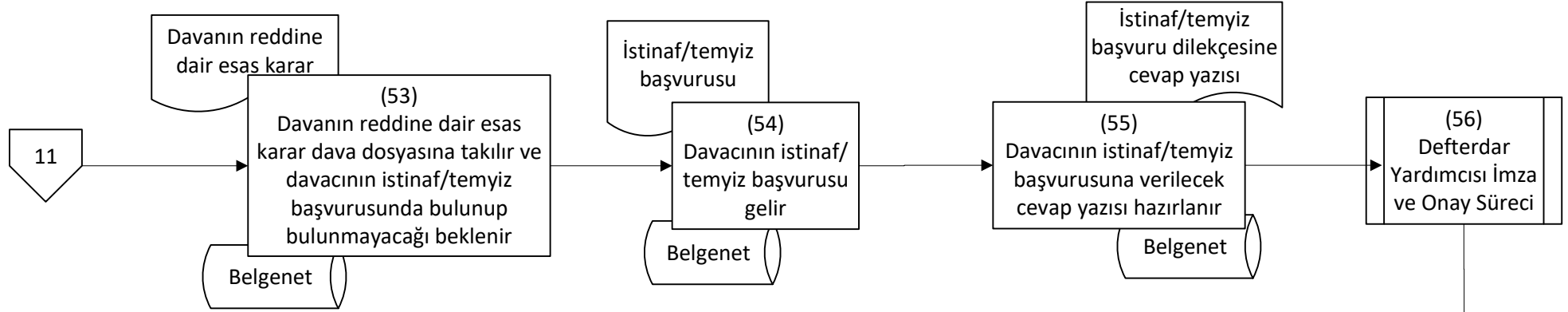








İdari davalar Servisi Personeli



Muhakemat Müdürlüğü

İdari davalar Servisi Personeli

Muhakemat Müdürlüğü

